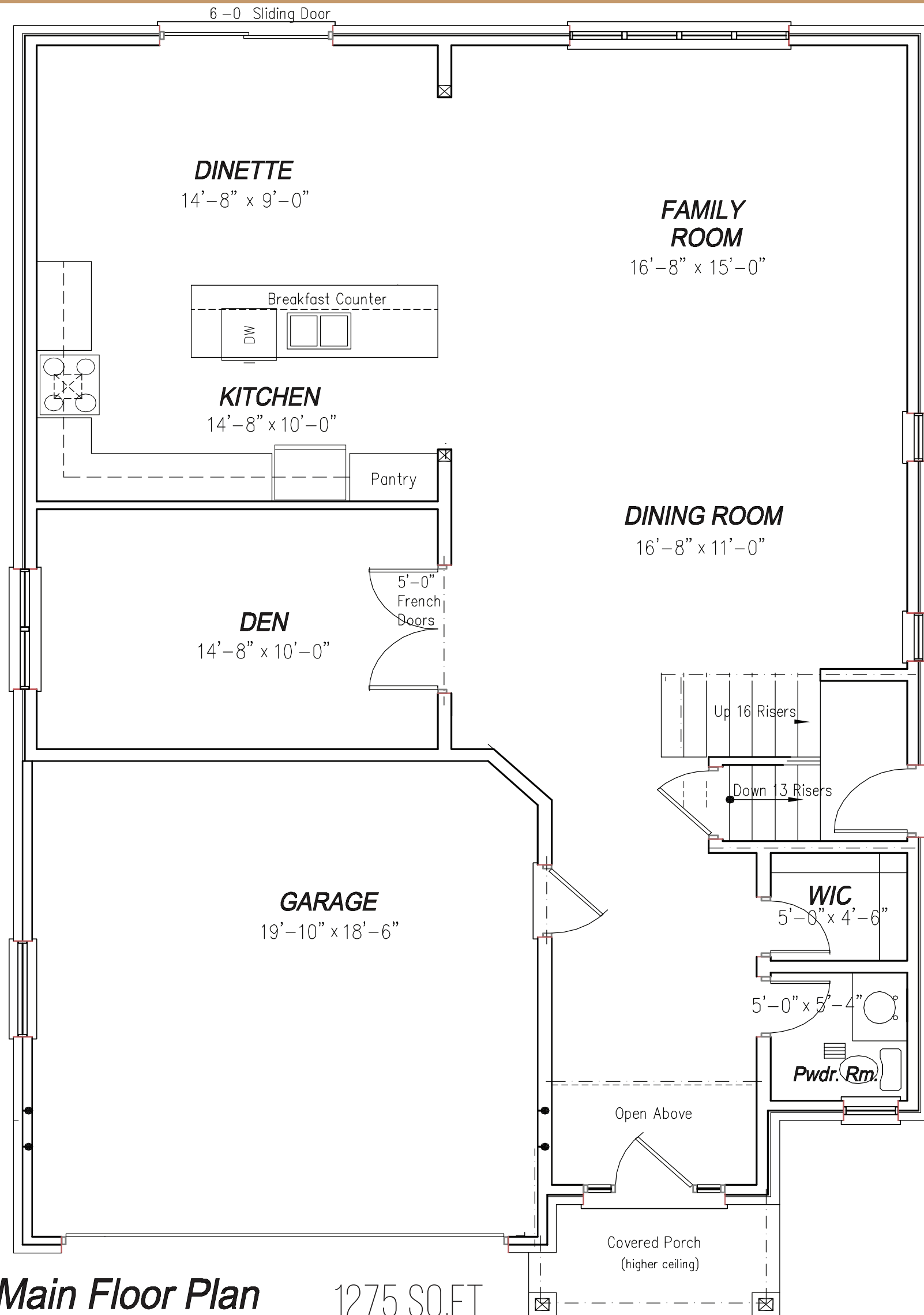


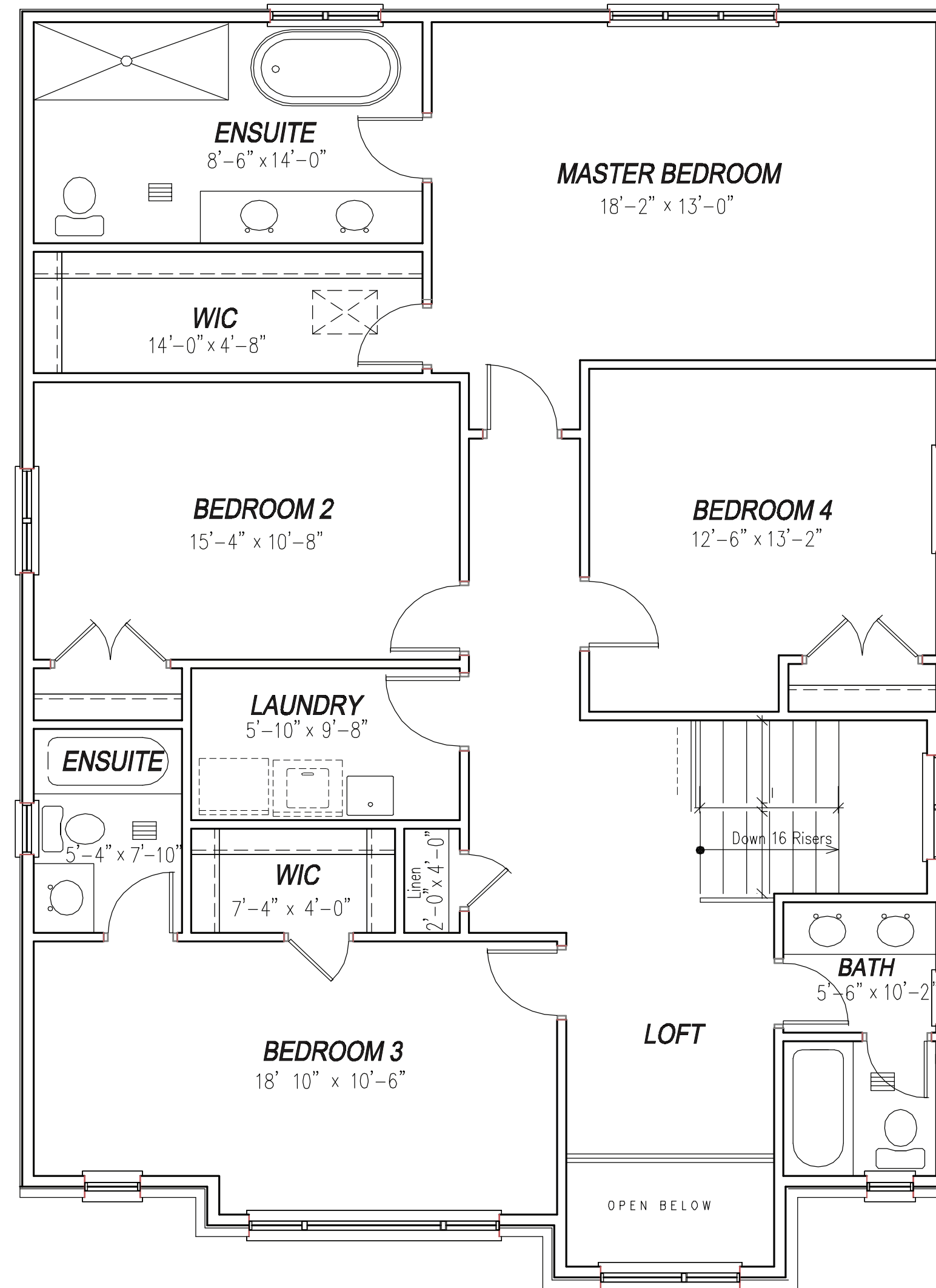
# The Lorient

2820 SQ.FT



**Main Floor Plan**  
9'-0" Main Floor Ceiling Height

1275 SQ.FT



**Second Floor Plan**  
8'-0" Second Floor Ceiling Height

1545 SQ.FT

Interior layout changes can be done at no extra charges

All house renderings and interior drawings are artist's conceptions. Material specifications and floor plans are subject to change without notice. All floor plans are approximate dimensions. Note: Actual usable floor space may vary from the stated floor area. Steps may vary at any exterior entrance ways due to grading. E&O.E.

StallionHomes is registered Builder with the Tarion Warranty Corporation, which administers the Ontario New Home Warranties Plan Act.

Optional Accessories