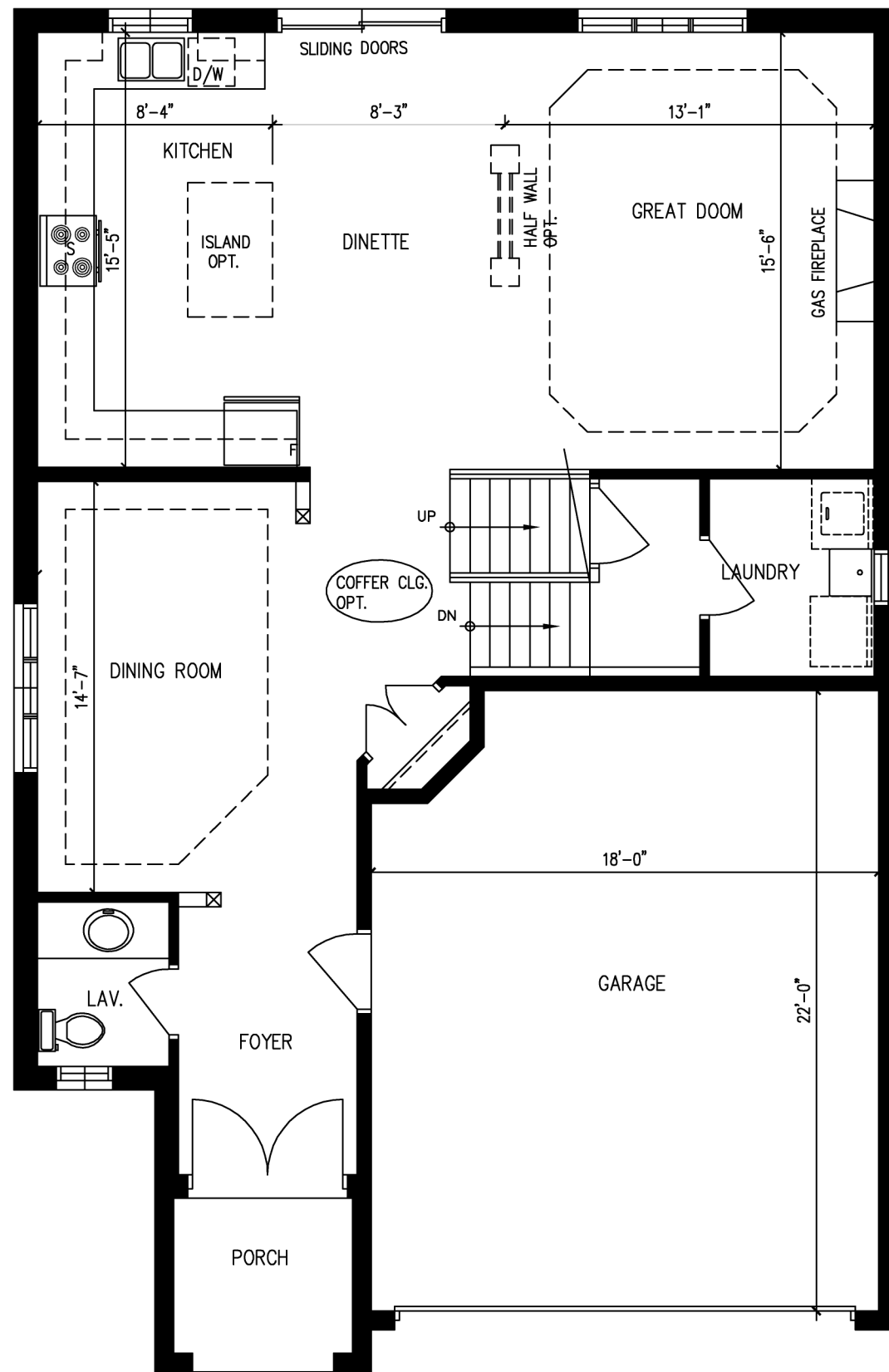
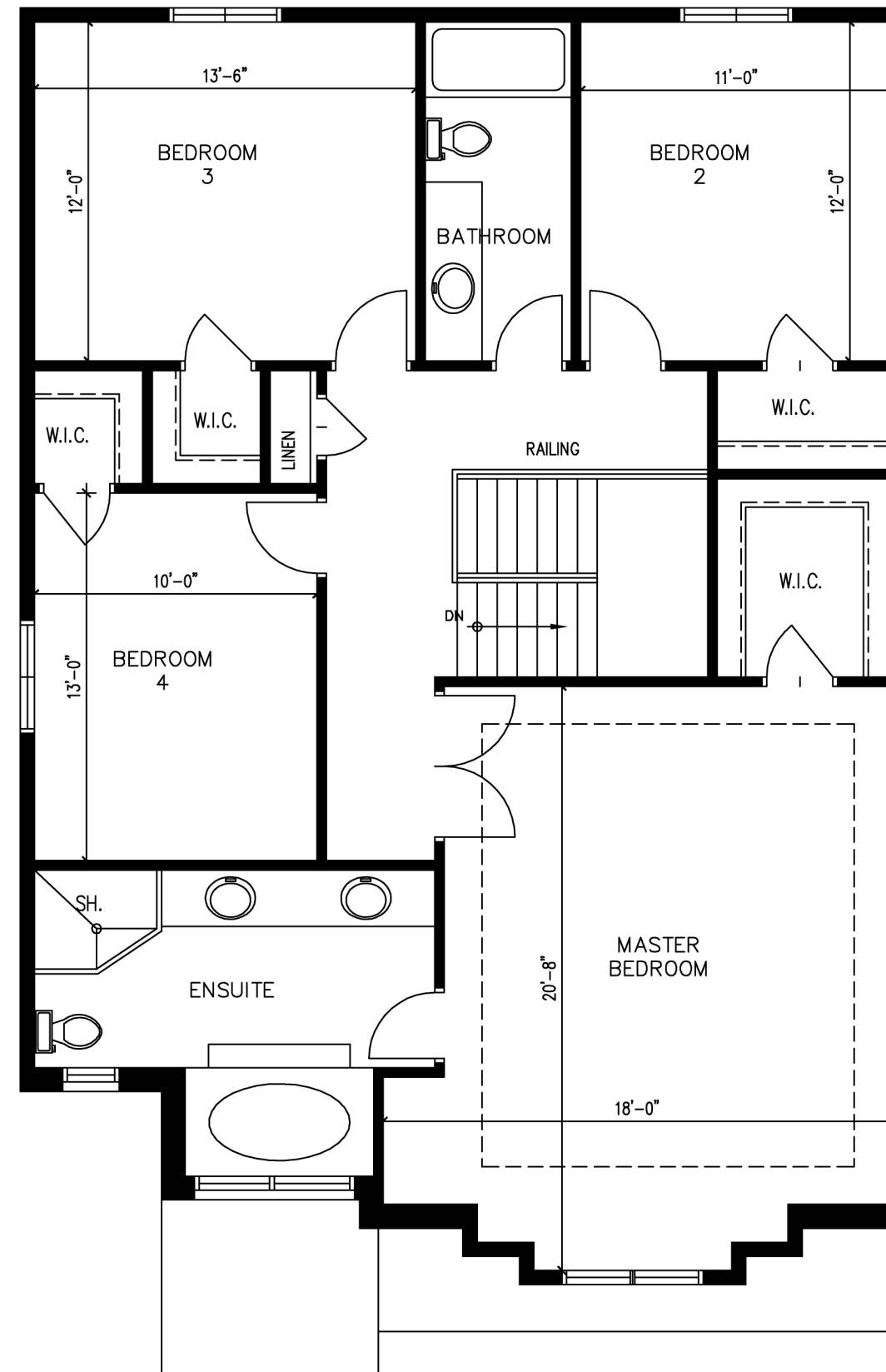


# The Maple

includes open to above 52 sq. ft.



**MAIN FLOOR** 980 sq.ft.



**SECOND FLOOR** 1280 sq.ft.



All house renderings and interior drawings are artist's conceptions. Material specifications and floor plans are subject to change without notice. All floor plans are approximate dimensions. Note: Actual usable floor space may vary from the stated floor areas. Steps may vary at any exterior entrance ways due to grading. E & O.E.

Zeina Homes is a Registered Builder with the Tarion Warranty Corporation, which administers the Ontario New Home Warranties Plan Act.

**Interior layout changes can be done at no extra charges.**